

# US 221 Widening

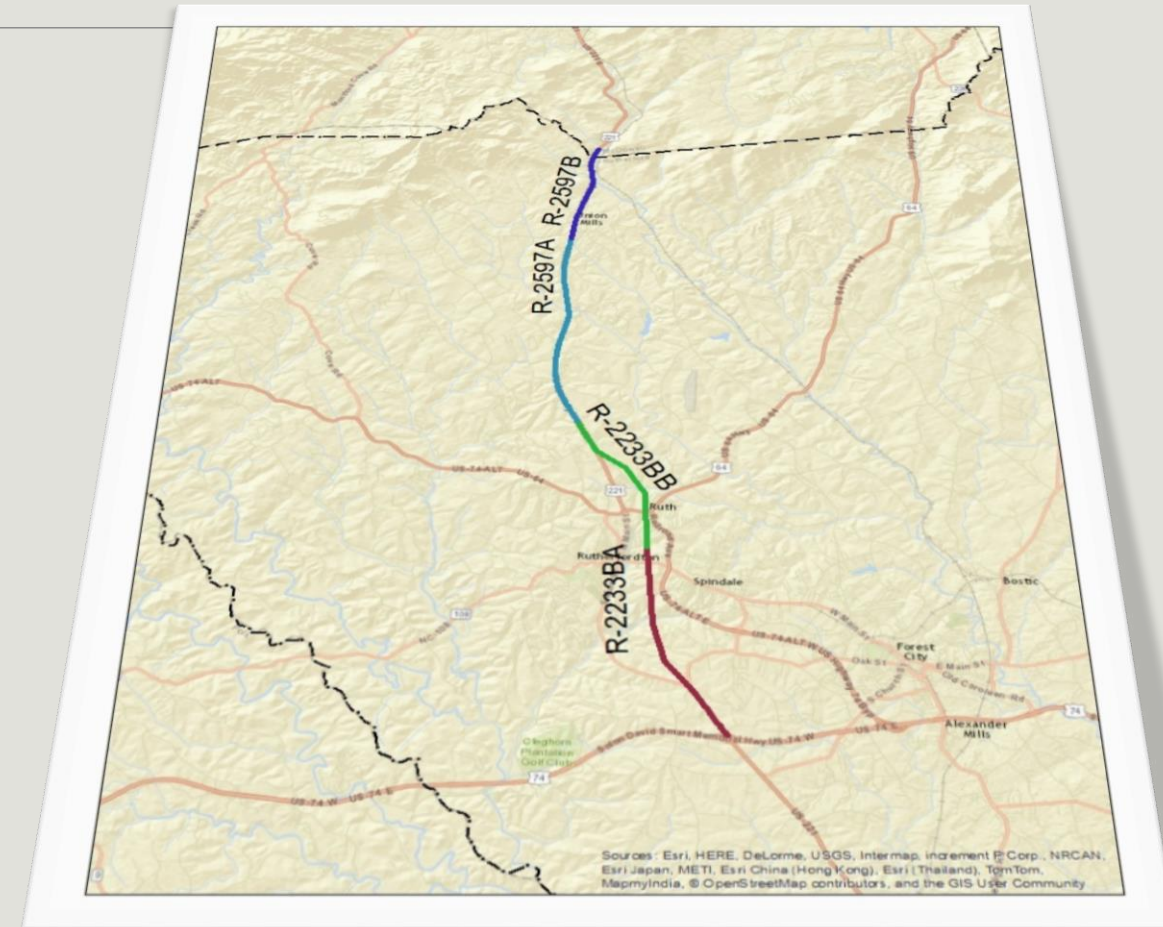
---

KARYL FULLER, DIRECTOR  
ISOTHERMAL RPO

# Rutherford County Overview

US 221 4-laning in Rutherford County is composed of 6 segments: R-2233AA, AB, BA, BB & R-2597A, B

Two segments, south of US 74 have been constructed, R-2233AA and R-2233AB.



Segment location is approximate.

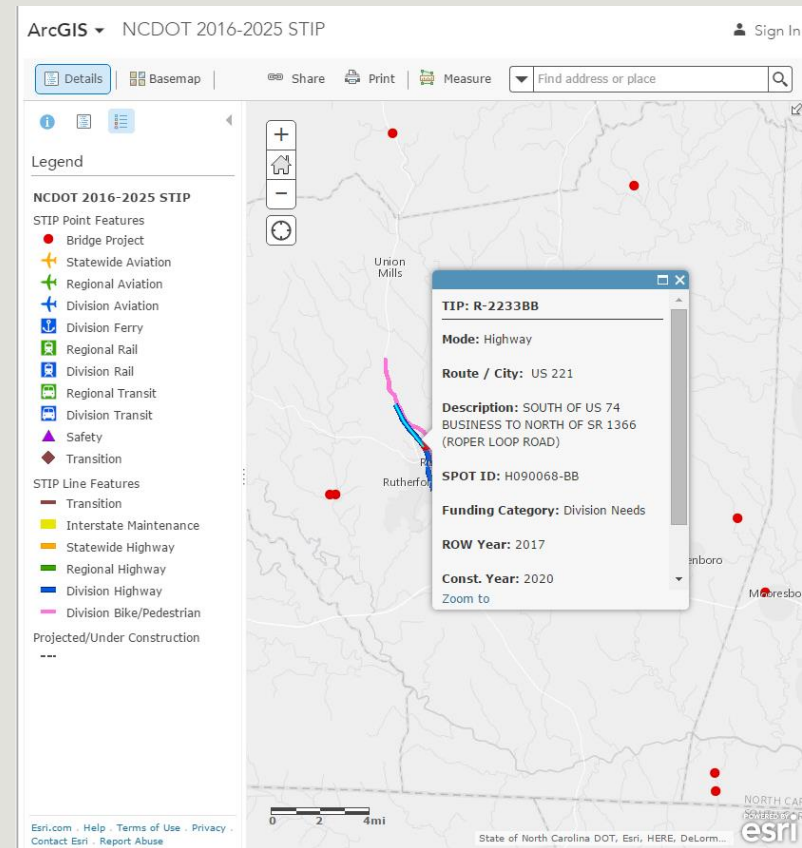
# R-2233BA & R-2233BB

Next, going from south to north is R-2233BA and R-2233BB.

There are maps on IRPO's website, showing both segments (in three maps, here: <http://isothermalrpo.org/map-resources/us-221b-maps/>).

The BB was funded in 2016-2025 Statewide Transportation Improvement Plan (STIP). Currently, property acquisition (ROW) is scheduled for FY 2018 and construction in FY 2020.

The BA section was funded in the 2018-2027 draft STIP. Currently, property acquisition is scheduled for FY 2022 and construction in FY 2025.



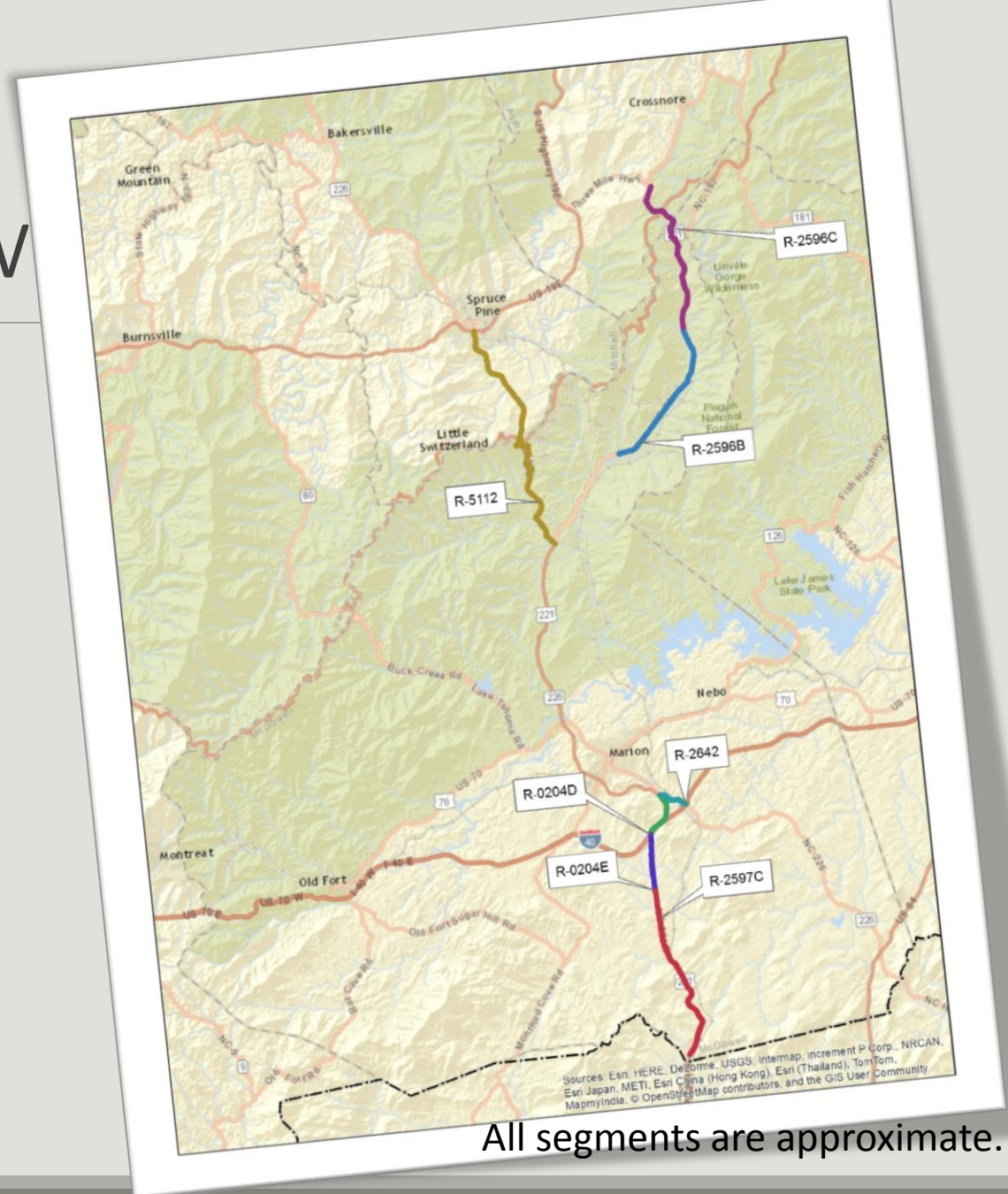




# McDowell County Overview

US 221 4-laning in McDowell County is composed of 5 segments: R-2597C, R-0204D, R-0204E, R-2596B and R-2596C

None of these sections are currently funded. All of the unfunded sections will be in SPOT 5 which is slated to begin Summer 2017.



All segments are approximate.